



ALL SS PRESSURE GAUGE

BOURDON



SPECIAL FEATURES

- STAINLESS STEEL CASE & MEASURING SYSTEM
- DRY OR LIQUID VERSION
- STANDARD FOLLOWED IN GENERAL EN 837 - 1/ IS 3624

AB

APPLICATIONS

FOOD & BEVERAGE, PHARMACEUTICAL, REGULATORS, PUMPS, HYDRO-CLEANING MACHINES, PRESSES, ENGINE COMPRESSORS, TURBINES, DIESEL ENGINES & REFRIGERATING PLANTS

SPECIFICATIONS

STANDARD VERSION : 40mm, 50mm

Accuracy	: ±2.5 % of F.S.
Ambient temperature	: - 20°C to + 60°C
Process temperature	: Max. 180°C
Operating pressure	: 75 % of the scale value
Over pressure limit	: 25 % for pressure ranges upto 100 kg/cm ² 15 % for pressure ranges above 100 kg/cm ²
Case	: AISI 304 SS
Ring	: AISI 304 SS (push fit type)
Socket	: AISI 316 SS
Bourdon	: AISI 316 SS
Movement	: AISI 304 SS
Joints	: TIG argon arc welding
Dial	: Aluminium, black graduation on white background
Pointer	: Aluminium, black Coloured Fixed
Window	: Sheet Glass
Gasket	: Neoprene

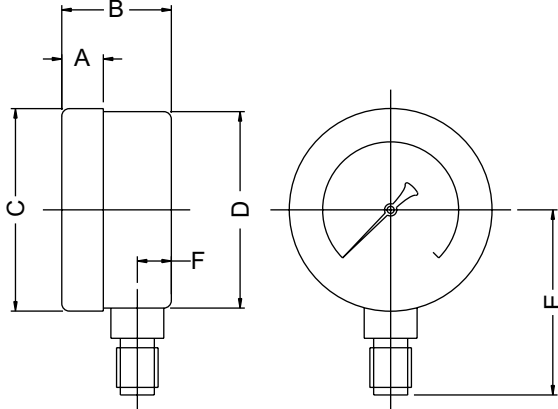
GLYCERINE FILLED VERSION (OPTION PY)

Process Temperature	: 15°C To 65°C
Window	: Plexi Glass
Dampening Liquids	: Glycerine 98 %
Ring	: AISI 304 SS, Crimped
Other Features	: Refer Specification of Standard Version

DRY BUT FILLABLE VERSION

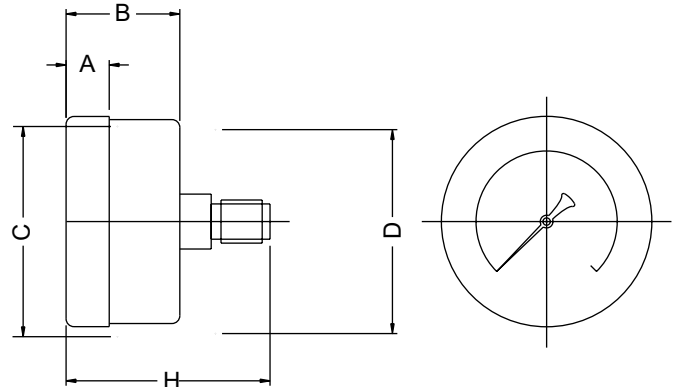
Option Code	: Fillable Dampening Liquid
FG	: For Glycerine 98% (PY)
FS	: For Silicon Oil (QA)

TYPE : 2



NS	A	B	C	D	E	F	WT(kg)
40	8	27	43	41.5	43.5	9	0.095
50	11	29	54	52	49	9	0.1

TYPE : 4



NS	A	B	C	D	H	WT(kg)
40	8	27	43	41.5	46	0.065
50	11	29	54	52	52	0.07

(*WEIGHTS MENTIONED ARE FOR STANDARD VERSION.)

Notes : • Drawings are not to scale. • All Dimensions are in mm. • NS = Nominal Size.



ALL SS PRESSURE GAUGE

BOURDON



RANGE TABLE

Note : Waaree offers Pressure ranges, Vacuum ranges and Compound ranges in Scales like kPa, Mpa, bar, psi, kg/cm² & Dual Scale like kPa with psi, kPa with bar, bar with psi or scales as per the requirement can be provided on request. Following are the example tables for kg/cm² & psi scales

PRESSURE RANGE

SINGLE SCALE (kg/cm ² or bar)					
RANGE		RANGE		RANGE	
0/1		0/4		0/16	
0/1.6		0/6		0/60	
0/2.5		0/10		0/100	
				0/160	
				0/250	
				-1/0	
DUAL SCALE (PSI with kg/cm ²)					
RANGE (PSI)		RANGE (kg/cm ²)		RANGE (PSI)	
0/15		1		0/300	
0/30		2		0/500	
0/60		4		0/600	
0/100		7		0/1000	
0/150		10		0/1500	
0/200		14		0/2000	
				21	
				35	
				42	
				70	
				105	
				140	
				0/3000	
				210	
				0/4000	
				280	
				30inHg / 0	
				- 1 / 0	

ACCESSORIES †

EB	COOLING TOWER	EC	GAUGE COCK	Dx	DIAPHRAGM SEALS
EG	SNUBBER	EF	NEEDLE VALVE		

† Refer Datasheet for complete specifications

HOW TO ORDER

BASIC MODEL

NOMINAL SIZE		AB						
B	40mm	C	50mm	B				
TYPE OF MOUNTING					2			
2	DIRECT BOTTOM ENTRY	4	DIRECT CENTRE BACK ENTRY					
GAUGE CONNECTION						2NM		
1BM	1/8" BSP (M) For 40mm Dial STANDARD	2NM	1/4" NPT (M) For 50mm Dial STANDARD					
1NM	1/8" NPT (M) For 40mm Dial STANDARD	2BM	1/4" BSP (M) FOR 50mm Dial STANDARD					
1TM	1/8" BSPT (M) For 40mm Dial STANDARD	2TM	1/4" BSPT (M) FOR 50mm Dial STANDARD					
ADAPTORS CAN BE PROVIDED FOR NON STD. FLARRED & FEMALE CONNECTIONS								
RANGE							0-10 kg/cm²	
REFER TABLES								
OPTIONS								SX
PW	FIVE POINT CALIBRATION CERTIFICATE	PX	DAMPENING LIQUID FLOUROUBE	SX	SS TAG PLATE			
QB	DAMPENING SCREW IN AISI 316 SS	FILLED		SW	DIAL TAG MARKING			
RH	CUSTOM DESIGNED DIAL	PY	DAMPENING LIQUID GLYCERINE	FS	FILLABLE LIQUID SILICON OIL*			
PZ	DAMPENING LIQUID MINERAL LIQUID			FG	FILLABLE LIQUID GLYCERINE			

* GASKET, BOD & PLUG OF VITON

Note : Due to continuous changes the specification may vary from time to time