



SS CASE TEST GAUGE

BOURDON, ACC $\pm 0.25\%$



SPECIAL FEATURES

- HIGH PRECISION MEASURING SYSTEM
- HIGH RESOLUTION DIAL
- ANTI PARALLAX MIRROR
- SOCKET & CASE WELDED CONSTRUCTION
- STAINLESS STEEL CASE
- STANDARD FOLLOWED IN GENERAL EN 837-1/IS 3624

APPLICATIONS

CALIBRATION / TESTING IN LABORATORY, FITS AT VARIOUS PROCESS INDUSTRIES.

SPECIFICATIONS

STANDARD VERSION : 150mm, 250mm

Accuracy	:	$\pm 0.25\%$ of F.S.
Ambient temperature	:	upto 65°C
Process temperature	:	+ 65°C
Operating Pressure	:	75% of the Scale Value
Case	:	AISI 304 SS
Ring	:	AISI 304 SS (Bayonet Type for NS 150mm, Push Fit Type for NS 250mm)
Bourdon	:	Beryllium Copper
Socket	:	AISI 316L SS
Movement	:	High Precision Jewel Bearing Type
Protection	:	IP 55
Pointer	:	Aluminium, black coloured micrometer zero adjustable Slotted '0' Adjustable for NS 250mm
Pointer Stopper	:	Spring Type
Gasket	:	Neoprene
Welding	:	Alloy Brazing
Blow Off Disc	:	Neoprene

ALL STAINLESS STEEL TEST GAUGE (OPTION - YQ)

Accuracy	:	$\pm 0.5\%$ OF F.S.
Ambient temperature	:	-25°C TO +65°C
Process temperature	:	-40°C TO +150°C
Bourdon	:	AISI 316L SS
Socket	:	AISI 316 L SS
Movement	:	AISI 304 SS
Welding	:	Tig Argon Arc Welding

OTHER FEATURES : REFER SPECIFICATION OF STANDARD VERSION

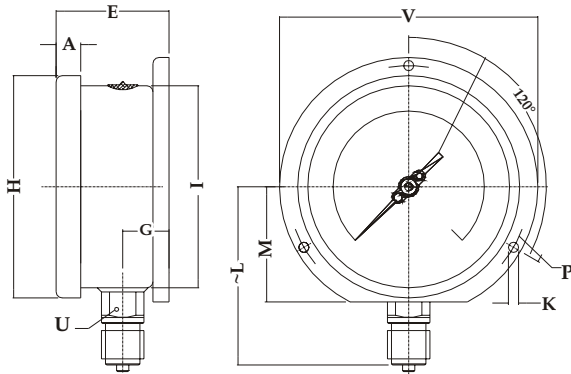


SS CASE TEST GAUGE

BOURDON, ACC $\pm 0.25\%$

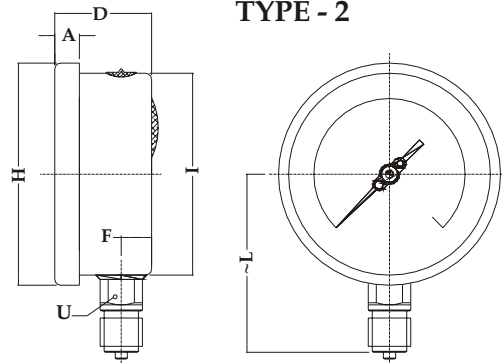


TYPE - 1



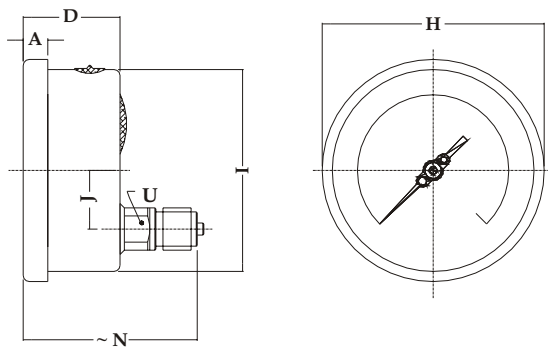
NS	A	E	G	H	I	K	L	M	P	U	V	Wt.in kg*
150	12	55	23	164	150	7	115	82	174	22	191	1.15

TYPE - 2



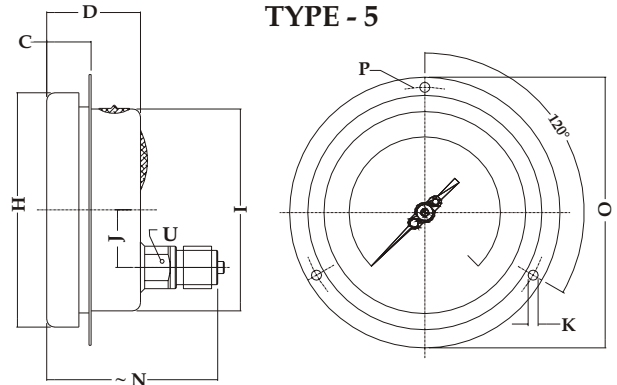
NS	A	D	F	H	I	L	U	Wt.in kg*
150	12	47	16.5	164	150	115	22	1.05

TYPE - 3



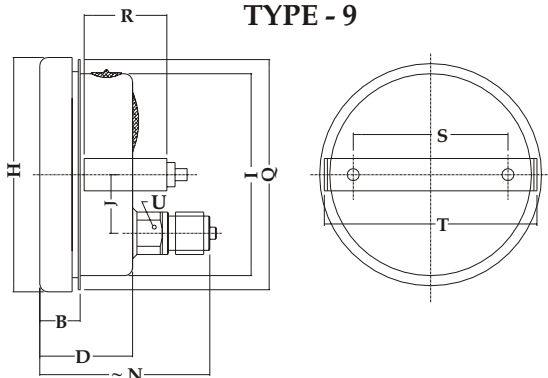
NS	A	D	H	I	J	N	U	Wt.in kg*
150	16	47	164	150	48	87	22	1.02

TYPE - 5



NS	C	D	H	I	J	K	N	O	P	U	Wt.in kg*
150	20	47	164	150	48	7	88	188	175	22	1.18

TYPE - 9



NS	B	D	H	I	J	N	Q	R	S	T	U	Wt.in kg*
150	20	47	164	150	48	87	160	43	105	160	22	1.12

(*WEIGHTS MENTIONED ARE FOR STANDARD VERSION.)

Notes : • Drawings are not to scale. • All Dimensions are in mm. • NS = Nominal Size.

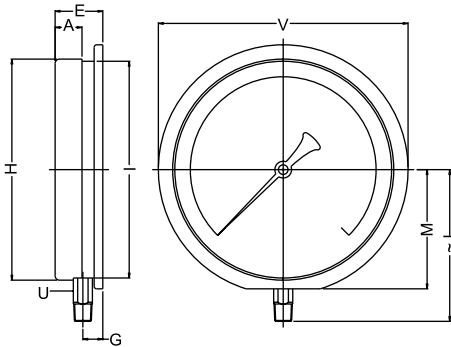


SS CASE TEST GAUGE

BOURDON, ACC $\pm 0.25\%$

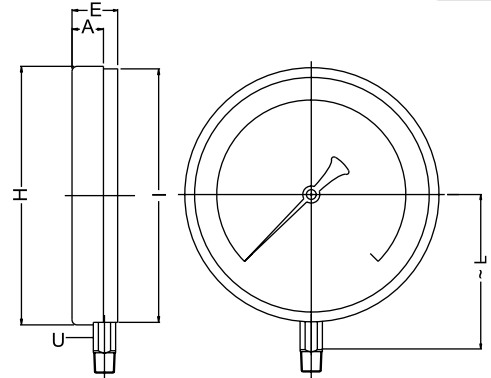


TYPE : 1



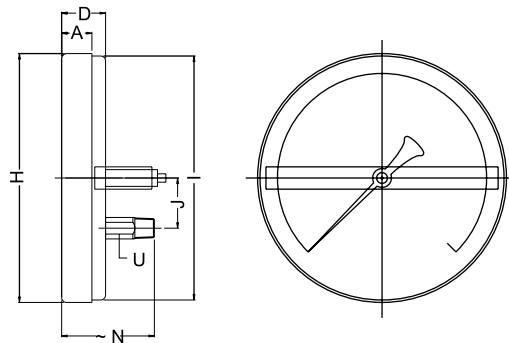
NS	A	E	G	H	I	~L	M	U	V	WT (kg)
250	31	55	23	255	250	175	140	22	290	2.12

TYPE : 2



NS	A	E	H	I	~L	U	WT(kg)
250	31	55	255	250	155	22	2.0

TYPE : 3



NS	A	D	H	I	J	~N	U	WT(kg)
250	31	50	250	248	50	100	22	1.75

(*WEIGHTS MENTIONED ARE FOR STANDARD VERSION.)

Notes : • Drawings are not to scale. • All Dimensions are in mm. • NS = Nominal Size.

RANGE TABLE

Note : Waaree offers National / International Scales like kPa, Mpa, bar, psi, kg/cm², mmHg & Dual Scale like kPa with psi, kPa with bar, bar with psi or Equivalent scales as per the requirement can be provided on request.

Following are the example tables for kg/cm²

VACUUM & PRESSURE RANGE

SINGLE SCALE				
RANGE & CODE (kg/cm ²)	RANGE & CODE (kg/cm ²)	RANGE & CODE (kg/cm ²)	RANGE & CODE (kg/cm ²)	RANGE & CODE (kg/cm ²)
0/0.6	0/4	0/25	0/160	0/1000
0/1	0/6	0/40	0/250	-760mm Hg/0
0/1.6	0/10	0/60	0/400	-1 to 0
0/2.5	0/16	0/100	0/600	

Note : Other Scale are available on request.



SS CASE TEST GAUGE

BOURDON, ACC ± 0.25%



HOW TO ORDER

BASIC MODEL

NOMINAL SIZE

H 150mm J 250mm

TYPE OF MOUNTING

- 1 WALL/ SURFACE/ PROJECTION MOUNTING WITH BOTTOM ENTRY
- 2 DIRECT BOTTOM ENTRY
- 3 DIRECT LOWER BACK ENTRY
- 5 FLUSH PANEL LOWER BACK ENTRY WITH FRONT FLANGE
- 9 LOWER BACK ENTRY WITH MOUNTING BRACKET

MOUNTING TYPE NOT AVAILABLE IN NS 250 mm

GAUGE CONNECTION

2BM 1/4" BSP (M)	3NM 3/8" NPT (M)	4TM 1/2" BSPT (M)
3BM 3/8" BSP (M)	4NM 1/2" NPT (M) STANDARD	2MM M12X1 (M)
4BM 1/2" BSP (M) STANDARD	2TM 1/4" BSPT (M)	3MM M 16X1.5 (M)
2NM 1/4" NPT (M)	3TM 3/8" BSPT (M)	4MM M20X1.5(M)

ADAPTORS CAN BE PROVIDED FOR NON STD. FLARED & FEMALE CONNECTIONS

RANGE

REFER TABLES

0-10
kg/cm²

OPTIONS

ZE CARRYING CASE FOR TEST GAUGE 250mm	OS BAYONET TYPE RING
PN CARRYING CASE FOR TEST GAUGE 150mm	SA INTERNAL OVER PRESSURE STOP
PW FIVE POINT FACTORY CALIBRATION CERTIFICATE	SB INTERNAL VACUUM STOP
QB DAMPENING SCREW IN AISI 316 SS	SG OXYGEN SERVICE
RH CUSTOM DESIGNED DIAL	SX SS TAG PLATE
RQ ENCLOSURE PROTECTION IP65	SW DIAL TAG MARKING

PW