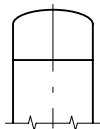


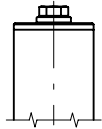
Options Chamber ends

with dampening spring on request

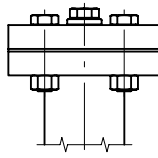
Chamber end top



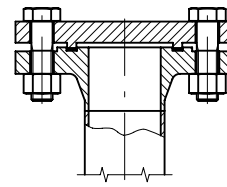
1
Welding cap



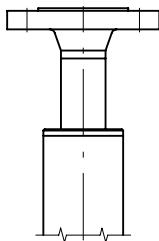
2
Flat top with vent plug G $\frac{1}{2}$ "



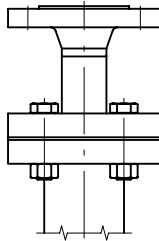
3
Flanged with vent plug G $\frac{1}{2}$ "



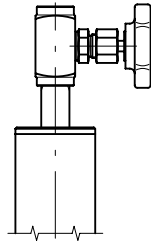
4
Flanged e.g. flange facings with groove and tongue according to DIN 2512



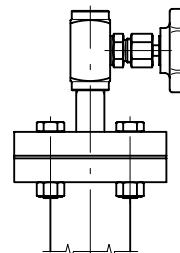
5
Flat top with vent flange



6
Flanged with vent flange

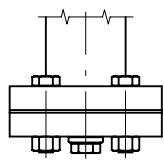


7
Flat top with vent valve

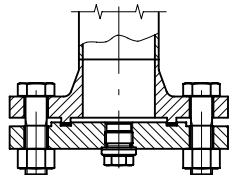


8
Flanged with vent valve

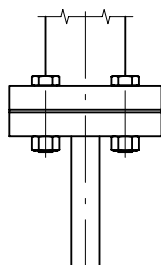
Chamber end bottom



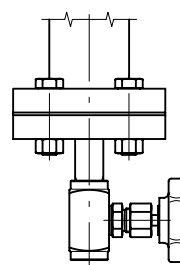
9
Flanged with drain plug G $\frac{1}{2}$ "



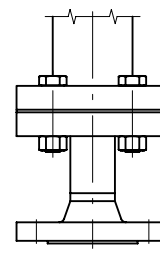
10
Flanged with drain plug G $\frac{1}{2}$ " e.g. flange facings with groove and tongue according to DIN 2512



11
Flanged with drain nozzle

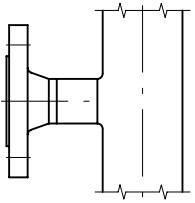


12
Flanged with drain valve



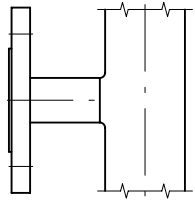
13
Flanged with drain flange

Options Process connections



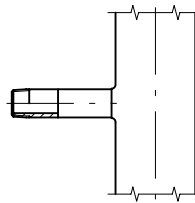
14

Welding neck flanges
up to DN25 (1")



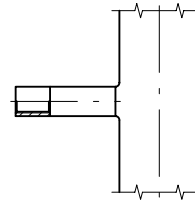
15

Blind flange
up to DN32 (1 1/4")



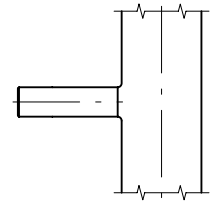
16

Threaded GN...
(Male)



17

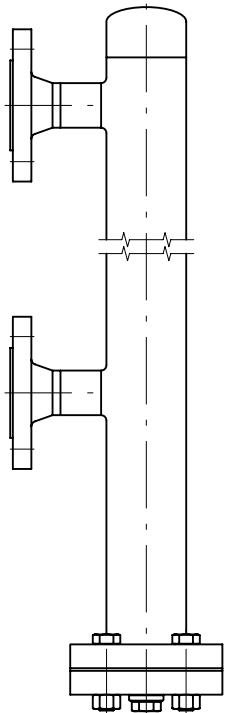
Threaded GN...
(Female)



18

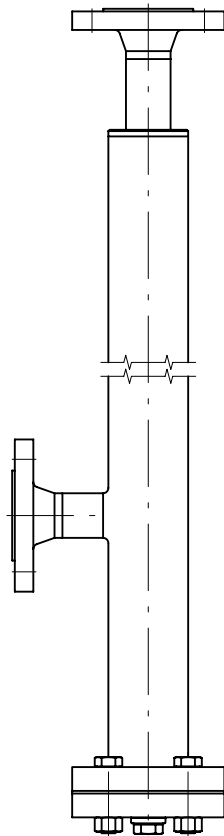
Welding stub S...

Examples process connections



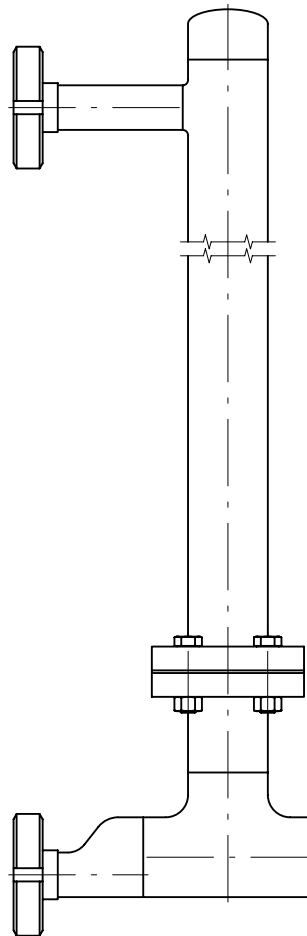
19

Standard
2 process connections
side-side



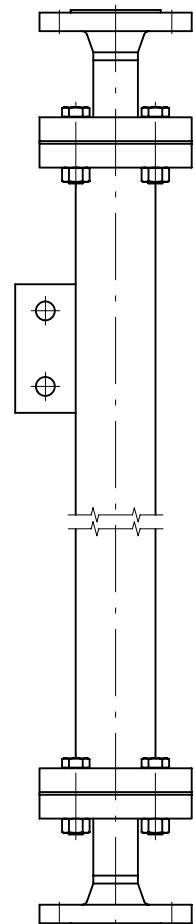
20

1 process connections
top
and side



21

2 process connections side-side
threaded acc. to DIN 11851
lower process connection with
eccentric reducer



22

Process connections
top and bottom
Option: Support brackets