

Needle Valve

NV

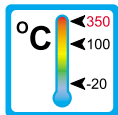
Operation

Seat and plug of the needle valve are conical shaped. By lifting or lowering the plug, the available cross-section can be increased or decreased, that way a fine adjustment of the actual flow is achieved.



Application

Flow-adjustment of liquids and gases.



Features

Characteristics of this sturdy type are:

- Suitability for high temperature
- high pressure resistance
- Threaded connections special threads on request

Installation hints

The installation of the needle valve can be done in any way in the system. The flow direction must be observed.

The needle valve must not be used as a supporting part in a pipeconstruction!

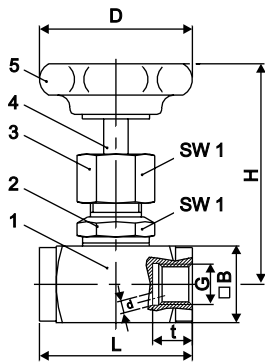
The medium must not contain any solid particles!
We recommend the installation of strainer type SFD or SFM.

NV 1 0001 07-04 E M



Technical Data

NV Stainless Steel



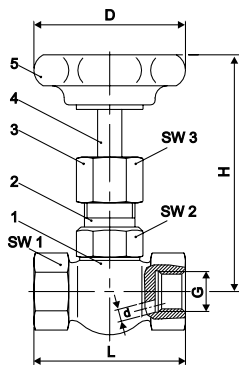
Pos.	Description	Material
1	Body	1.4571
2	Stemguide	1.4571
3	Stuffing-box nut	1.4571
4	Stem	1.4571
5	Handwheel	Plastic
not illustrated	Stem sealing	Teflon, optional Graphite

Thread	L	H	D	t	B	SW 1	d	kv-value*
G 1/8"	45	70	50	11	25	22	4	4
G 1/4"	50	72	50	13	25	22	5	8
G 3/8"	55	72	50	13	25	22	6	10
G 1/2"	60	72	63	16	30	22	7	12
G 3/4"	75	95	63	18	35	27	9	18
G 1"	100	110	90	22	45	32	12	32
G 1 1/4"	110	130	100	24	60	41	15	60
G 1 1/2"	130	140	100	28	70	41	22	115
G 2"	130	140	100	28	70	41	22	130

*in l/min, at 1 bar differential pressure and max. opening

Technical Data				
Connection:	Withworth - pipe thread according to DIN 259, female both sides (other on request)			
Temperature max.:	250 °C (350 °C with graphite stem sealing)			
Nominal Pressure (PN):	200 bar, from 50 °C watch pressure derate			
Pressure derate:	at 50 °C: 6%	at 100 °C: 15 %	at 200 °C: 37%	at 300 °C: 60 % at 400 °C: 84 %

NV Brass



Pos.	Description	Material
1	Body	Cu Zn 39 Pb 3 F 37
2	Stemguide	Ms 58
3	Stuffing-box nut	Ms 58
4	Stem	Ms 58
5	Handwheel	Plastic
not illustrated	Stem sealing	G 1/8" to G 1/2" Perbunan G 3/4" to G 2" Teflon

Thread	L	H	D	SW 1	SW 2	SW 3	d	kv-value*
G 1/8"	50	70	50	22	19	19	4	4
G 1/4"	50	78	50	22	19	19	5	8
G 3/8"	50	78	50	22	19	19	6	10
G 1/2"	55	78	63	25	19	19	6,5	11
G 3/4"	67	90	63	32	22	22	9	18
G 1"	75	95	63	40	22	22	11	—
G 1 1/4"	110	105	90	54	24	27	13	—
G 1 1/2"	110	110	90	58	24	27	15	—
G 2"	110	110	90	70	27	27	15	—

*in l/min, at 1 bar differential pressure and max. opening

Technical Data				
Connection:	Withworth - pipe thread DIN 259, female both sides (other on request)			
Temperature max.:	100 °C			
Nominal pressure (PN):	100 bar, from 50 °C watch pressure derate			
Pressure derate:	at 50 °C: 6 %	at 100 °C: 15%		